

BiteGuard KennelPlex™



BiteGuard KennelPlex™ Commercial Dog Doors



The Toughest Kennel Doors on the Planet™
Serving Animal Professionals Worldwide

BiteGuard KennelPlex™

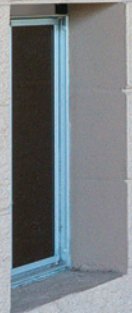
The BiteGuard™ Advantage

Professional quality kennel doors featuring anodized aluminum frames and trim



- 🐾 Chew Proof
- 🐾 Energy Efficient
- 🐾 Whisper Quiet
- 🐾 Security Features
- 🐾 Long Lasting
- 🐾 Great Looking

Safe and Easy for All Dogs to Use



BiteGuard KennelPlex™

BiteGuard KennelPlex™ Commercial Dog Doors

Table of Contents

The BiteGuard KennelPlex Advantage	1
Table of Contents	2
BiteGuard Commercial Dog Doors	3
Energy Efficient Kennel Door Designs	4
Top Swing Kennel Doors	5
Saloon Style Kennel Doors	6
BiteGuard Door Series	7
BiteGuard Wall Series	8
BiteGuard Surface Mount Series	9
Slide-In Close-Off Cover System	10
Guillotine Kennel Door System	11-12
Benefits to You and Your Kennel	13
The Toughest Dog Doors on the Planet™	14

Serving Animal Professionals Worldwide

BiteGuard KennelPlex™



BiteGuard KennelPlex™ Commercial Dog Doors



Featuring Two
Energy Efficient
Designs:

**Single Panel
Top Swing**

and

**Dual Panel
Saloon Style**

Kennel Doors



Versatility for all types of installations

Models engineered for the requirements of professional kennels worldwide

Door Series

The **BiteGuard Door Series** models are designed for installation through entry doors. The interior and exterior frame sections combine to self-frame in standard 44mm U.S. entry doors. Trim adapters are available for installations through doors with a non-standard thickness.

Wall Series

When an exterior wall is chosen for the kennel door location, **BiteGuard Wall Series** models provide the perfect solution. Wall Series kits include aluminum tunnel sections that connect the interior and exterior frames to provide for a professional fit and finish.

Surface Mount

The **BiteGuard Surface Mount** models are ideal for dog door installations through concrete block or unique surface materials. This model features a one-piece aluminum frame adapter that mounts directly to the wall surface. Also ideal for retro-fit installations.

The Toughest Dog Doors on the Planet™

BiteGuard KennelPlex™



Superior Quality and Exceptional Energy Efficiency by Design

Innovation, engineering and premium materials are at the core of every **BiteGuard KennelPlex** product

Heavy Duty Aluminum Frames

Anodized aluminum frame will not warp, crack or rust. The satin finish provides a quality appearance and allows for easy cleaning.

Maximum Energy Efficiency

Doors close tightly after each use. Plush high density nylon pile weather seal ensures superior draft control.

10 mm Solid Acrylic Panels

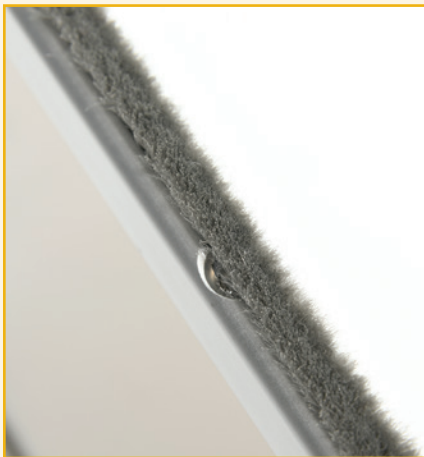
Tinted see-through panels let the light in and provide a window for dogs. Manufactured from the same material used for jet plane windows.

Chew Proof Aluminum Trim

Door panels are equipped with hardened aluminum trim to protect each panel and inhibit chewing.



Guaranteed Chew Proof!



Plush high-pile industrial **Weather Seal** provides insulation and quiet operation.



Close-up shows aluminum trim, weather seal lining and **Stainless Steel Pivot Pin**.



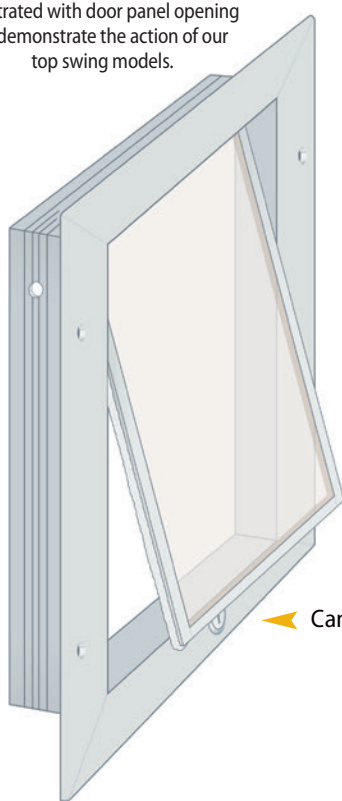
Lock and Key for an added layer security and peace-of-mind when not in use.

Top Swing Kennel Doors



The **Top Swing** models feature our single panel design. The 10 mm tinted acrylic door panel has 13 mm hardened aluminum trim on all sides to maximize durability and prevent damage by chewing dogs. The door panel is trimmed with plush nylon weather seal for insulation and quiet operation. The **Top Swing** model accommodates dogs weighing, or soon to be weighing, up to 100 pounds. Not recommended for small breeds or timid dogs.

Illustrated with door panel opening to demonstrate the action of our top swing models.



Frame Depth

The depth of the frame section is measured from the back of the frame flange.

Frame Depth 44mm

Rough Opening Height

The rough opening dimensions are specific to each model. This measurement is used to establish the opening required to ensure a proper installation.

BG SP 1419
489 mm

Rough Opening Height

BG SP 1624
616 mm

Cam Lock

The key lock can be used to regulate access and for an added level of security when not in use.

Cam Lock

Frame Flange

It is important to consider the frame flange dimension when calculating a floor mount installation.

41mm Frame Flange

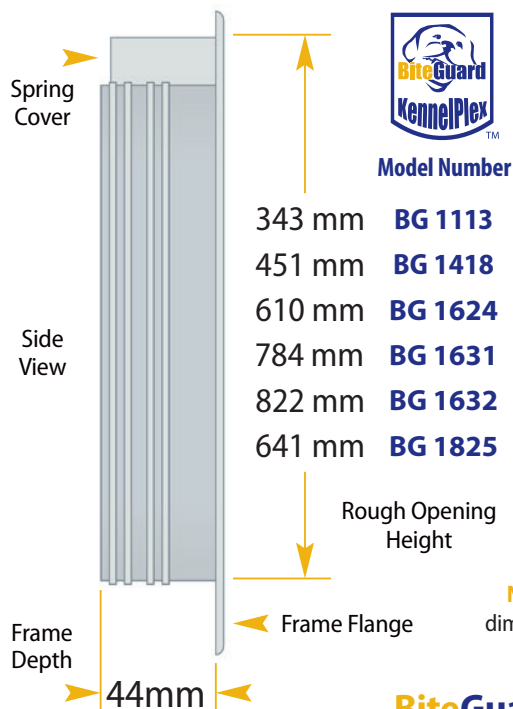
Side View

BiteGuard Top Swing Model Dimensions

Model Number	Dog Passage	Rough Opening	Overall Dimensions
BG SP 1419	337 mm x 406 mm	362 mm x 464 mm	418 mm x 518 mm
BG SP 1624	381 mm x 530 mm	410 mm x 616 mm	462 mm x 645 mm
Dimensions are listed width by height. Note: contact us for complete Wall Model specifications.			

Saloon Style Kennel Doors

Our innovative dual panel kennel doors are named for their unique **Saloon Style** action. The dual panel design allows small and large dogs to use the same kennel door. They open with a gentle push and return to closed position assisted by spring dampeners concealed within the aluminum frame. Plush weather seal trim increases energy efficiency and provides remarkably quiet operation.



Security Lock and Key

The key lock feature can be used to regulate use of the kennel door and secures access when not in use.

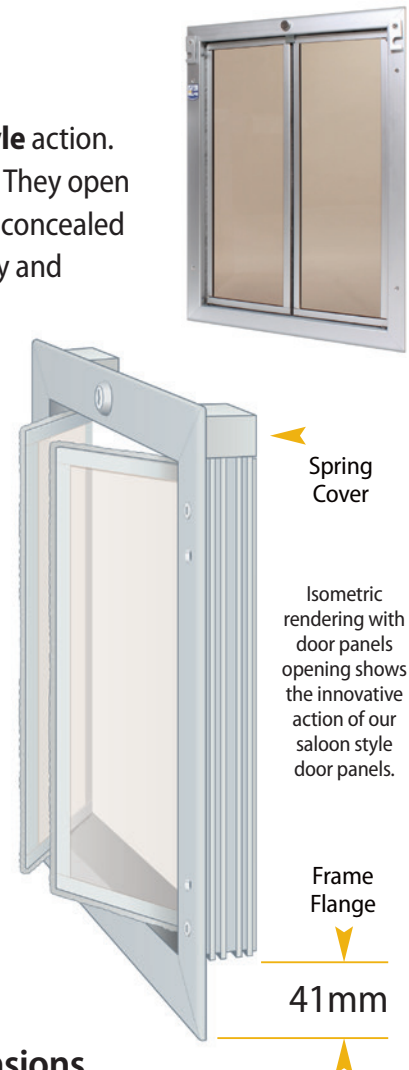
Saloon Style Door Panels

Heavy duty and built to last. The tinted see-through panels are solid 10 mm acrylic. Half-inch hardened aluminum trim provides extra durability and inhibits chewing.

Aluminum Frames

The anodized aluminum frames will not crack, warp or rust. The satin finish provides a quality appearance and is easy to keep clean.

Note: It is important to consider the frame flange dimension when calculating a floor mount installation.



BiteGuard Saloon Style Model Dimensions

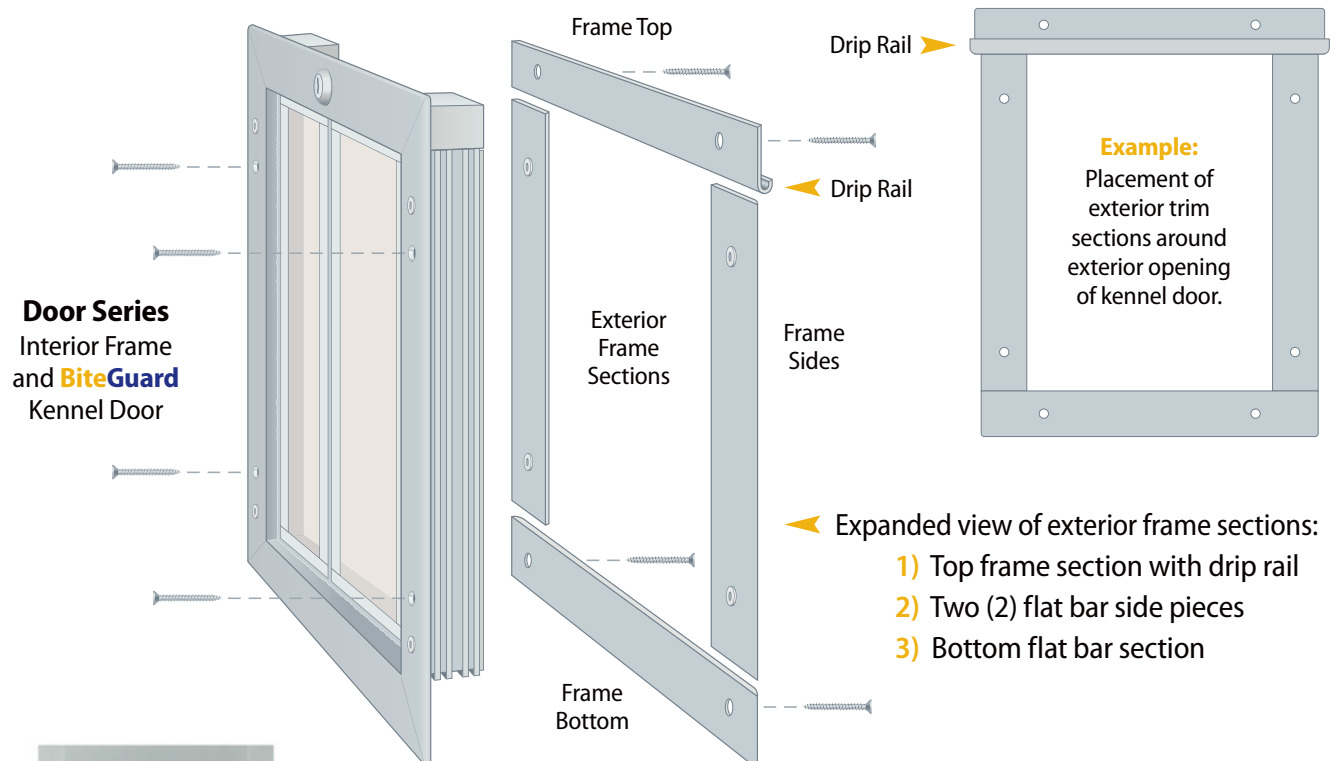
Model Number	Dog Passage	Rough Opening	Overall Dimensions
BG 1113	229 mm x 305 mm	292 mm x 343 mm	349 mm x 394 mm
BG 1418	298 mm x 406 mm	362 mm x 451 mm	419 mm x 489 mm
BG 1624	340 mm x 568 mm	410 mm x 610 mm	460 mm x 645 mm
BG 1631	340 mm x 746 mm	410 mm x 784 mm	460 mm x 822 mm
BG 1632	340 mm x 797 mm	410 mm x 822 mm	460 mm x 860 mm
BG 1825	406 mm x 603 mm	464 mm x 641 mm	521 mm x 679 mm

Dimensions are listed **width** by **height**. **Note:** contact us for complete **Wall Model** specifications.



BiteGuard Door Series

The **Door Series** is designed for installations into entry doors. Frame depth is 44 mm to ensure a proper fit through standard U.S. or Canadian entry doors.



BiteGuard Door Series Dimensions

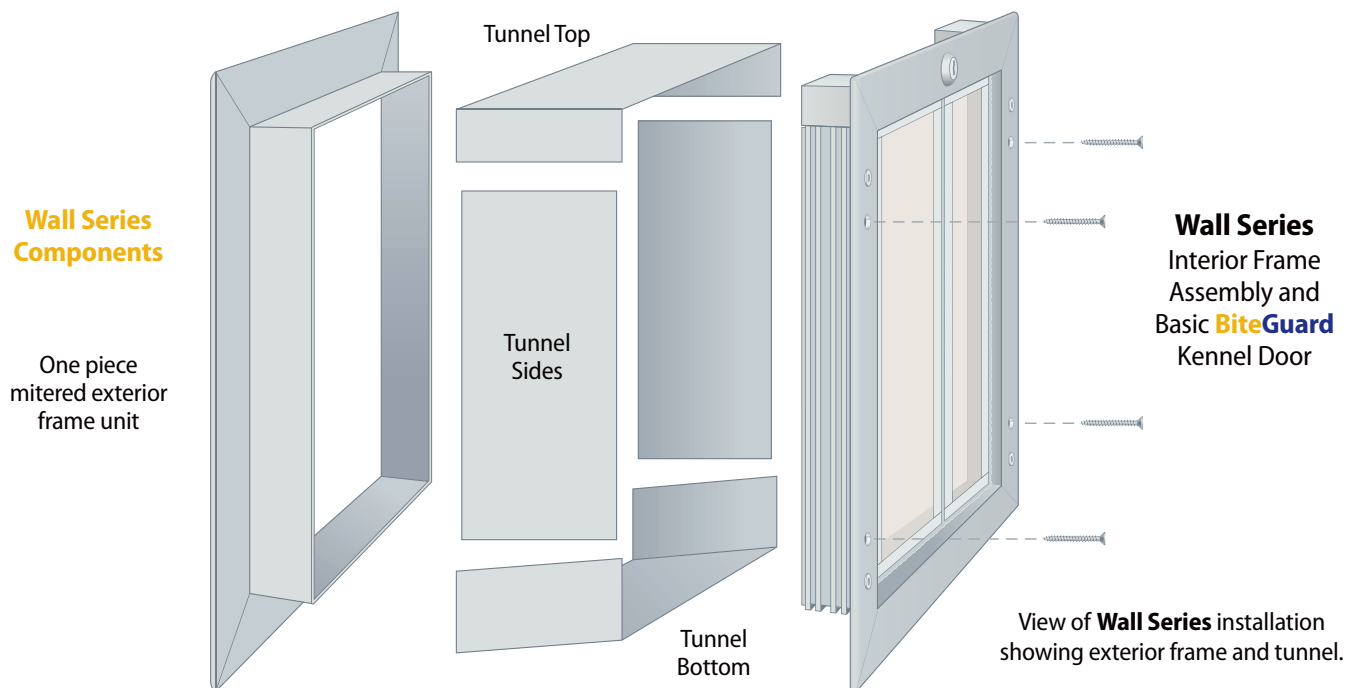
Model Number	Dog Passage	Rough Opening
BG DOOR 1113	229 mm x 305 mm	292 mm x 343 mm
BG DOOR 1418	298 mm x 406 mm	362 mm x 451 mm
BG DOOR 1624	340 mm x 568 mm	410 mm x 610 mm
BG DOOR 1632	340 mm x 797 mm	410 mm x 822 mm
BG DOOR 1825	406 mm x 603 mm	464 mm x 641 mm
BG DOOR SP1419	337 mm x 406 mm	362 mm x 464 mm
BG DOOR SP1624	381 mm x 530 mm	410 mm x 616 mm

Dimensions are listed **width** by **height**. **Note:** contact us for complete installation instructions.

BiteGuard Wall Series



BG Wall Mount models have aluminum tunnel sections and a one piece mitered opposing frame. **Wall Series** units span the wall cavity. Tunnel pieces shingle over each other to eliminate water intrusion into the wall. The wall series system is designed to install with slope for drainage. Standard wall series tunnel pieces finish out up to 305 mm of wall depth. Longer tunnel pieces are available on request.



BiteGuard Wall Series Dimensions

Model Number	Dog Passage (width x height)
BG WALL 1113	229 mm x 305 mm
BG WALL 1418	298 mm x 406 mm
BG WALL 1624	340 mm x 568 mm
BG WALL 1632	340 mm x 797 mm
BG WALL 1825	406 mm x 603 mm
BG WALL SP1419	337 mm x 406 mm
BG WALL SP1624	381 mm x 530 mm

Note: contact us for complete installation instructions.

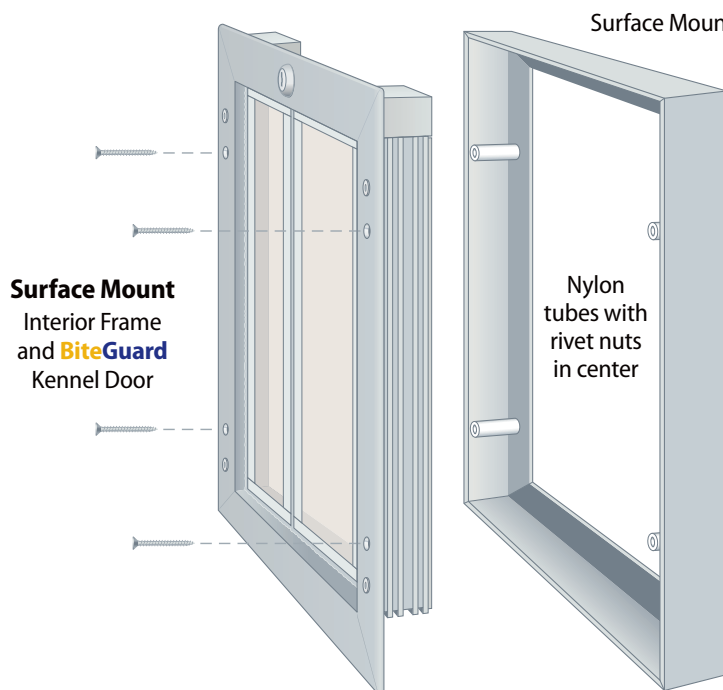


BiteGuard KennelPlex™



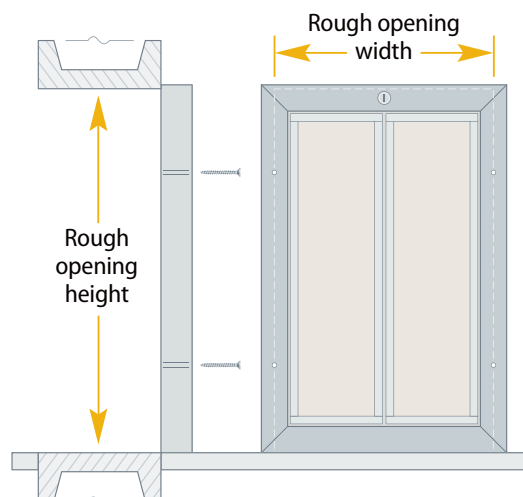
BiteGuard Surface Mount Series

BG Surface Mount models include a one piece aluminum box frame to make installation on a block surface more uniform. The surface mount models offer versatility for custom applications and simplifies retro-fit installations.



Sample Frame Adapter Installation

There are many different configurations possible.



The **Surface Mount Series** in a professional kennel installation.



BiteGuard Surface Mount Series Dimensions

Model Number	Dog Passage	Recommended Finished Opening*	Overall Dimensions
BG SurfaceMt 1113	229 mm x 305 mm	284 mm x 356 mm	354 mm x 391 mm
BG SurfaceMt 1418	298 mm x 406 mm	351 mm x 449 mm	422 mm x 494 mm
BG SurfaceMt 1624	340 mm x 568 mm	395 mm x 616 mm	467 mm x 651 mm
BG SurfaceMt 1631	340 mm x 746 mm	395 mm x 794 mm	467 mm x 829 mm
BG SurfaceMt 1632	340 mm x 797 mm	395 mm x 838 mm	467 mm x 864 mm
BG SurfaceMt 1825	406 mm x 603 mm	452 mm x 648 mm	524 mm x 686 mm
BG SurfaceMt SP1419	337 mm x 406 mm	349 mm x 478 mm	423 mm x 522 mm
BG SurfaceMt SP1624	381 mm x 530 mm	395 mm x 616 mm	467 mm x 651 mm

Dimensions are listed **width** by **height**. **Note:** contact us for complete installation instructions and cut sheets.

* Dimensions shown are for installations where the finished opening is flush with the finished floor as illustrated in the sample installation above. For other types of installation please contact us for specific cut sheets.

Slide-In Close-Off Cover System

BiteGuard commercial closure featuring composite panel dog door cover and insulated aluminum side track rails



Pictured with sliding cover panel partially open.

Tough ABS Composite Cover Panel

- Durable
- Chew proof
- Washable
- Chemical resistant

Panels are raised and lowered by hand. The quick release pin lock secures panel in closed position.



Quick release pin lock.

Anodized Aluminum Side Rails

- Heavy duty military grade aluminum
- Plush weather seal lined channels inside each rail
- Quick release pin lock and insert port position

The anodized aluminum side rails will not rust and are highly resistant to chemicals, corrosion and warping.

Insulated Weather Seal Cross Bar

Installs across the top of kennel door opening.

- Designed to reduce drafts and energy loss
- Commercial grade weather seal lining on cross bar and inside each side rail channel for added insulation and smooth operation

Inset shows **Weather Seal Bar** installation and plush weather seal. >



Guillotine Kennel Door System

The **BiteGuard KennelPlex™** Guillotine System allows for remote operation of the dog door closure panels without having to enter each kennel.



The guillotine cable system allows for safe and convenient operation of the **BiteGuard** cover panel. The panel can be set to **open** or **closed** position from outside of the kennel adding an added level of safety for you and your staff.

Featured System Components:

- 1 1270 mm military grade anodized aluminum rails
- 2 660 mm aircraft quality stainless steel cable
- 3 Corrosion resistant pulleys, cable clamps and hardware
- 4 Chemical resistant nylon tubing cable handle loop
- 5 Insulated weather seal cross bar
- 6 Quick release pin lock



Each **BiteGuard** Guillotine Kennel Door System includes:

- Aluminum side rails
- Composite cover panel
- Stainless steel cable
- Quality pulleys and hardware
- Pull handle loop nylon tubing
- Cross-bar with weather seal

Aluminum side rails will not rust and are corrosion and warp resistant.

BiteGuard KennelPlex™



Cover panel raised to open position by cable system.



Panel closed without having to enter the kennel.

Rugged ABS Composite Cover Panel

- 6mm thickness
- Washable surface
- Chew proof
- Chemical resistant
- Manual or cable use
- Black thermoplastic

Anodized Aluminum Side Rails

- Heavy duty military grade aluminum
- Plush weather strip insulated channels
- Rust proof and chemical resistant



BiteGuard Guillotine System with Blue Cable Guard

The **Cable Guard** is designed to conceal the top portion of the side rail and cable assembly as well as the door panel while in the open position. An excellent addition for environments designated to accommodate overactive or aggressive breeds.

BiteGuard KennelPlex™

*The benefits of **BiteGuard™** to you and your kennel*

Energy Efficiency

Each **BiteGuard** model is designed to keep the heat inside during winter and conserve air conditioning during summer. The thermal qualities help to save on utility expenses. Keeps the flies out too!

Quality and Durability

Reduce maintenance expenses when you install **BiteGuard** kennel doors. No fragile flap doors here! Our use of quality components assure years of trouble-free performance and reliability.

Time Savings

With 24-hour access to the great out doors, dogs require less staff interaction and produce less mess to clean up in your kennels. Your staff will have more time to focus on revenue generating tasks.



Quiet Operation

The **BiteGuard** door panels operate in a smooth quiet manner. The action of our insulated panels does not produce loud noises and will not disturb the dogs or annoy you and your staff.

Ease of Use – For All Dogs

The **BiteGuard** saloon style door panels open with a gentle push allowing easy access by dogs of all sizes, even puppies. Models are available in a range of dimensions to accommodate all breeds.

Pet Safety

The **BiteGuard** models are designed and engineered with a priority for pet safety. The gentle operation assures safe use, eliminating the possibility of injury and does not harm noses or tails.



BiteGuard KennelPlex™

The Toughest Dog Doors on the Planet™

14 Years In Service



BiteGuard Model: **BG1825**

Replacement for constantly
damaged flap doors >



**Fondation Barry du Grand
Saint Bernard**

Martigny, Switzerland

16 Years In Service



BiteGuard Model: **BG1825**

Replaced the previous
mud flap-style doors >



**Fondation Ecole Romande
pour Chiens-Guides d'Aveugles**
Brenles, Switzerland

First Year In Service



BiteGuard Model: **BG1624**

Replaced old flaps for years
of trouble-free service >



**Red Barn
Boarding Kennel**
Lexington, South Carolina

BiteGuard KennelPlex™ – the kennel doors that last!



For more information, please call: **941-752-7021**

What kennel owners are saying about BiteGuard™

"The BiteGuard kennel doors have really cut our fuel bills down."

Jeff Woods – Misty Pines Kennel
Sewickley, Pennsylvania

"If you're looking for the best, choose BiteGuard."

Curtis Gebers – Red Rock Canyon Cane Corsos,
Las Vegas, Nevada

"Previously I repaired or replaced 100 kennel doors a year. Now that I have the BiteGuard doors I haven't replaced or repaired a door in three years. A big time money saver."

Monroe Lindler – Red Barn Kennel
Lexington, South Carolina

"Our adult dogs went in and out of the new doors easily... It took the pups a little longer to learn to go through the door versus using the old flaps but that is not a problem..."

Maria Hevner – The Seeing Eye Whelping Kennel
Morristown, New Jersey

"We can stand behind the BiteGuard's ability to withstand our colder Canadian climate."

Sheila Sutton – Spotted Spa Retreat
British Columbia, Canada

"The BiteGuard kennel doors have stood up to the beating the dogs give them."

Alex Pierson – Private Kennel
Ontario, Canada

"I own a boarding kennel in Iowa and I not only needed doors that withstand abuse from dogs, but also from our harsh winter weather. The dog suites stay very warm in winter and cool in summer. The saloon style is perfect for dogs with weak hip joints or back issues. The door is so versatile that even the smallest dog can easily use the largest door. I will not purchase any other door. I love it and the dogs do too!"

Michelle Ahrendsen – Pet Place Lodging, Anamosa, Iowa

Serving Animal Professionals Worldwide



BiteGuard KennelPlex™
Commercial Dog Doors

PDUSA, Inc.

4523 30th Street West, Bradenton, Florida 34207-1072

Phone: **941-752-7021** Email: **support@kennelplex.net**



www.BiteGuardKennelPlex.com

